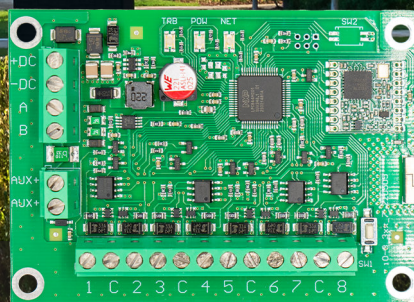


iO8-LoRa expander

Range of operation up to 5000 m



8 I/O terminals

iO8-LORA is expander for FLEXi SP3 control panel and TRIKDIS LoRa series modules, it increase the number of inputs and outputs in a device.

▼ IO8-LORA EXPANDER

LoRa (short for long range) is a spread spectrum modulation technique derived from chirp spread spectrum (CSS) technology. Semtech's LoRa is a long range, low power wireless platform that has become the de facto wireless platform of Internet of Things (IoT).

LoRa devices have amassed several hundred known uses cases for smart cities, homes and buildings, communities, metering, supply chain and logistics, agriculture, and more.

FEATURES

Communication:

- Line-of-sight wireless range up to 5000 m.
- Up to 8 iO8-LORA wireless expanders can be connected to the "FLEXi" SP3 control panel.

Inputs and outputs::

- 8 I/O terminals, each one can be set as an input (IN) or output (OUT). Input (IN) types: ATZ, EOL, NC, NO. Different value of resistors can be used in EOL and ATZ type circuits.

Connection:

- The iO-8-LORA wireless expander is connected to the "FLEXi" SP3 control panel via the RF-LORA transceiver.

SPECIFICATIONS:

Power supply voltage	9-26 V DC
Current consumption	Up to 50 mA (stand-by) Up to 150 mA (short-term, while sending)
Transmission frequency	433,3-434,7 MHz
Modulation type	LoRa
Report encryption	Yes
Range in open space	5000 m
Dual purpose terminals [I/O]	8, IN or OUT function selected during programming. When IN is selected, available types: NC, NO, EOL, EOL_T, 3EOL, ATZ, ATZ_T. When OUT is selected, the terminal becomes open collector (OC) type with up to 100 mA current
Operating environment	Temperature from -10 °C to 50 °C, relative humidity - up to 80% at +20 °C
Communicator dimensions	62 x 82 x 25 mm
Weight	0.08 kg

